

# Earth Day Quiz



1. More than half of the breathable oxygen in the world comes from where?

- A. Forests
- B. Oceans
- C. Flowering Plants
- D. Clouds.

2. How much of the world's oxygen is produced by just the Amazon rainforest?

- A. 1%
- B. 5%
- C. 10%
- D. 20%

3. How much oxygen does an average 50-year-old tree provide?

- A. Enough for 1 person/year
- B. Enough for 4 people/year
- C. Enough for 8 people/year
- D. Enough for 10 people/year

4. Around the world, how many indigenous people live in forests?

- A. 1 million
- B. 5 million
- C. 8 million
- D. 50 million

5. Which land-based ecosystem holds the most biodiversity, i.e. concentration of plants and animals?

- A. Tropical forests
- B. African savannah
- C. South Pacific Islands
- D. Coral reefs.



6. How many people in the world are dependent on fish as their main source of daily protein?

- A. 33%
- B. 43%
- C. 53%
- D. 63%

7. What percentage of crops are dependent on bee pollination in the U.S.

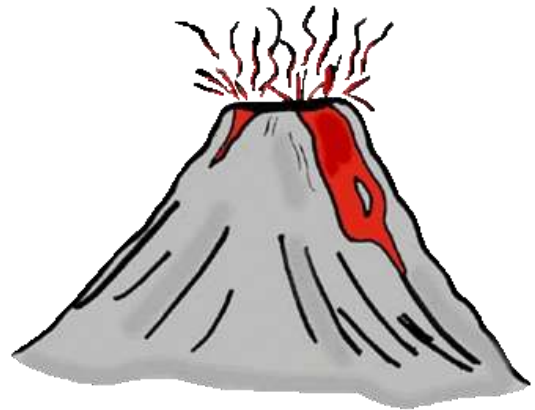
- A. 100%
- B. 30%
- C. 65%
- D. 90%

8. What can you do to help protect coral reefs?
- A. Buy and use oxybenzone and octinoxate-free sunscreen
  - B. Avoid purchasing coral
  - C. Choose seafood that has been sustainably sourced.
  - D. All of the above

9. How are microplastics (plastics that are less than 5 millimeters long) a threat to crustaceans?
- A. Microplastics are not a threat to crustaceans because they are biodegradable and safe to digest.
  - B. Microplastics are so small that they do not post any harm to crustaceans or humans.
  - C. Microplastics can damage organs and increase exposure to toxic chemicals.
  - D. None of the above.

10. Which of the following are threatened with extinction?
- A. Giraffes
  - B. Elephants
  - C. Corals
  - D. Whales

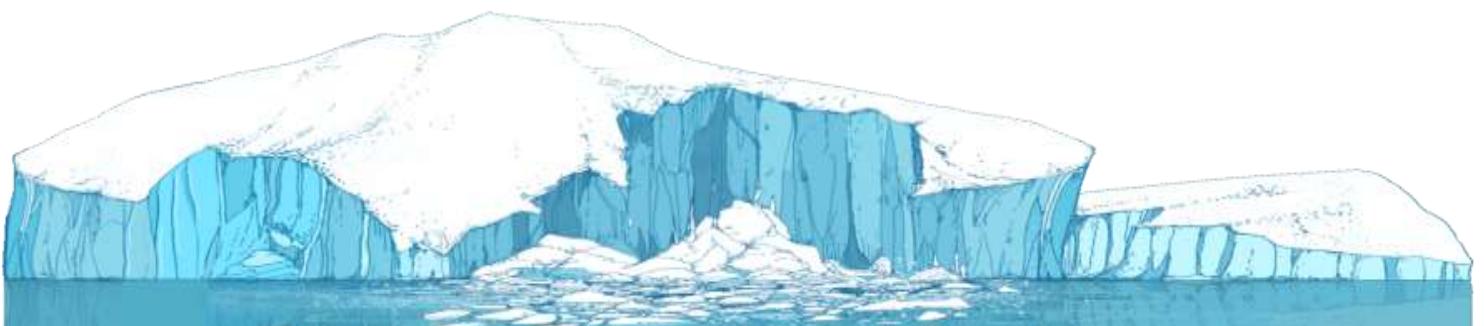
11. Where is the largest active volcano on the planet?
- A. Italy
  - B. United States
  - C. Japan
  - D. Mexico



12. Which country is home to the greatest biodiversity of plants and animals?
- A. Costa Rica
  - B. Brazil
  - C. China
  - D. Ecuador

13. On average, what is the approximate daily home water use for each person in the U.S.?
- A. 25 gallons
  - B. 50 gallons
  - C. 100 gallons
  - D. 200 gallons

14. On average, what percentage of household water is used outdoors for watering lawns and gardens?
- A. 10-30 %
  - B. 30-50 %
  - C. 50-70 %
  - D. 70-90 %



15. Approximately what percentage of the water in the world can be used to meet the agricultural, residential, manufacturing, community and personal needs of humans?

- A. 1%
- B. 5%
- C. 25%
- D. 40%

16. Approximately how many sheets of 100% virgin copy paper can be made from one tree that is roughly 40 feet tall and 6-8 inches in diameter?

- A. 2,000 sheets
- B. 8,000 sheets
- C. 20,000 sheets
- D. 50,000 sheets



17. In the average home, which of the following uses the most water?

- A. Flushing the toilet
- B. Filling the bathtub
- C. Taking a 10-minute shower
- D. Washing one load of clothes

18. For approximately how long can a person live without water?

- A. Two days
- B. Four days
- C. One week
- D. Two weeks

19. Which of the following takes the longest time to break down or disintegrate?

- A. Disposable diaper
- B. Hard plastic container
- C. Aluminum can
- D. Plastic 6-pack holder

20. Which of the following accounts for the greatest percentage of total waste in the U.S.?

- A. Yard trimmings
- B. Paper
- C. Plastics
- D. Glass



21. In the same amount of time, which of the following home appliances consumes the most electricity?

- A. Space heater
- B. Hair dryer
- C. Computer and monitor
- D. Water heater

22. Which of the following accounts for the greatest percentage of a typical home energy bill?

- A. Heating and cooling
- B. Clothes washer and dryer
- C. Computer and monitor
- D. Refrigerator

23. Which of the following is NOT a renewable resource?

- A. Ethanol
- B. Natural gas
- C. Hydrogen
- D. Methanol

24. What substance is released into the atmosphere when solid waste, fossil fuels and wood products are burned?

- A. Hydrogen peroxide
- B. Sodium chloride
- C. Carbon dioxide
- D. Calcium sulfate

25. Which of the following U.S. government environmental acts were NOT a result of the first Earth Day demonstrations?

- A. Endangered Species Act
- B. Clean Water Act
- C. Clean Air Act
- D. Marine Mammal Protection Act

